

# "LES TERRASSES DU STILETTO" - Bâtiment A1

Chemin du Stiletto - AJACCIO

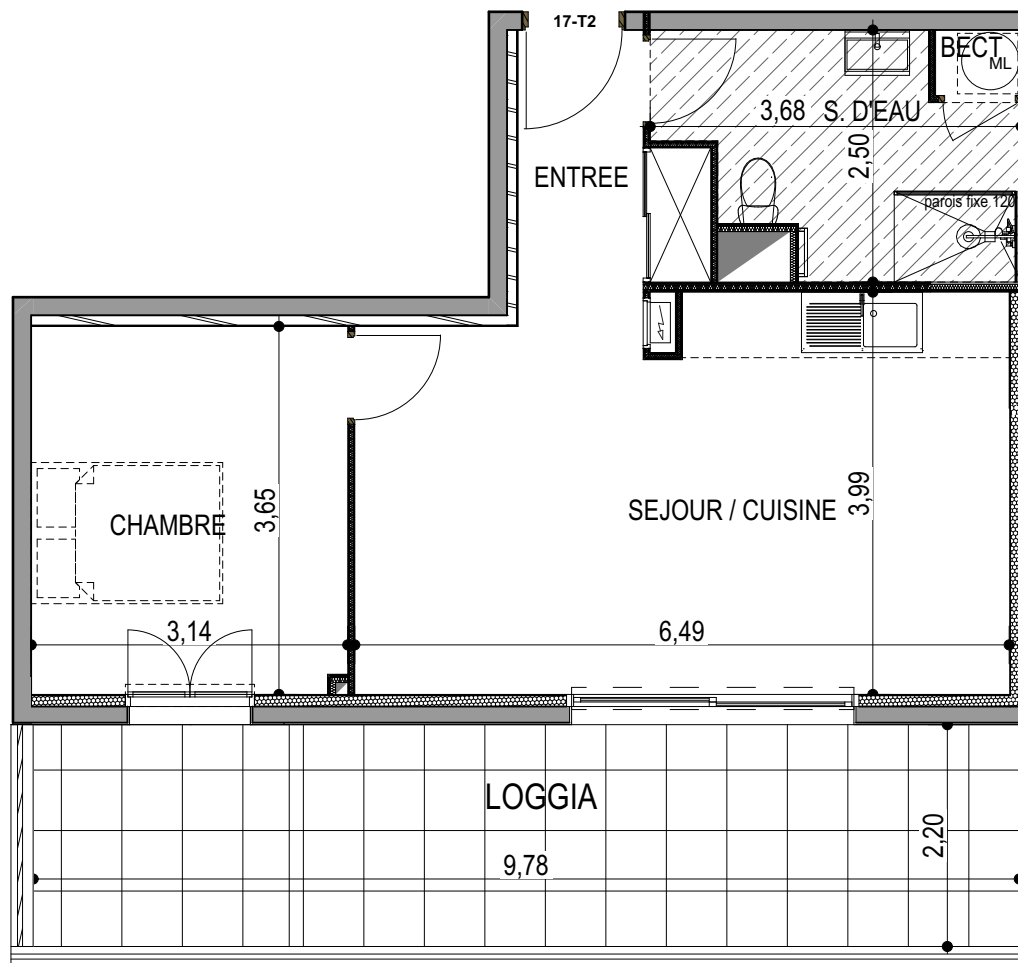
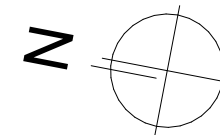
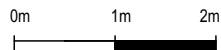
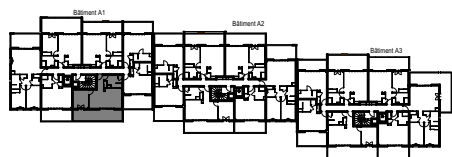
**Appartement: A1-17**

R+1

T2

**Surfaces habitables**

|                  |                            |
|------------------|----------------------------|
| Entrée           | 4.00 m <sup>2</sup>        |
| Séjour - Cuisine | 25.10 m <sup>2</sup>       |
| Chambre          | 11.45 m <sup>2</sup>       |
| Salle d'eau      | 7.15 m <sup>2</sup>        |
| Placard ECT      | 0.55 m <sup>2</sup>        |
| <b>TOTAL</b>     | <b>48.25 m<sup>2</sup></b> |
| Loggia           | 21.50 m <sup>2</sup>       |



**PLAN DE VENTE**