

# "LES TERRASSES DU STILETTO" - Bâtiment B1

Chemin du Stiletto - AJACCIO

**Appartement: B1-32**

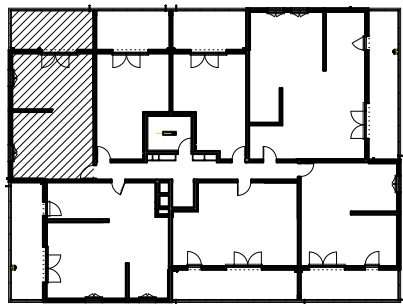
R+3

T2

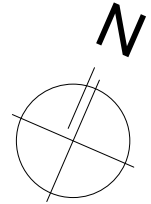
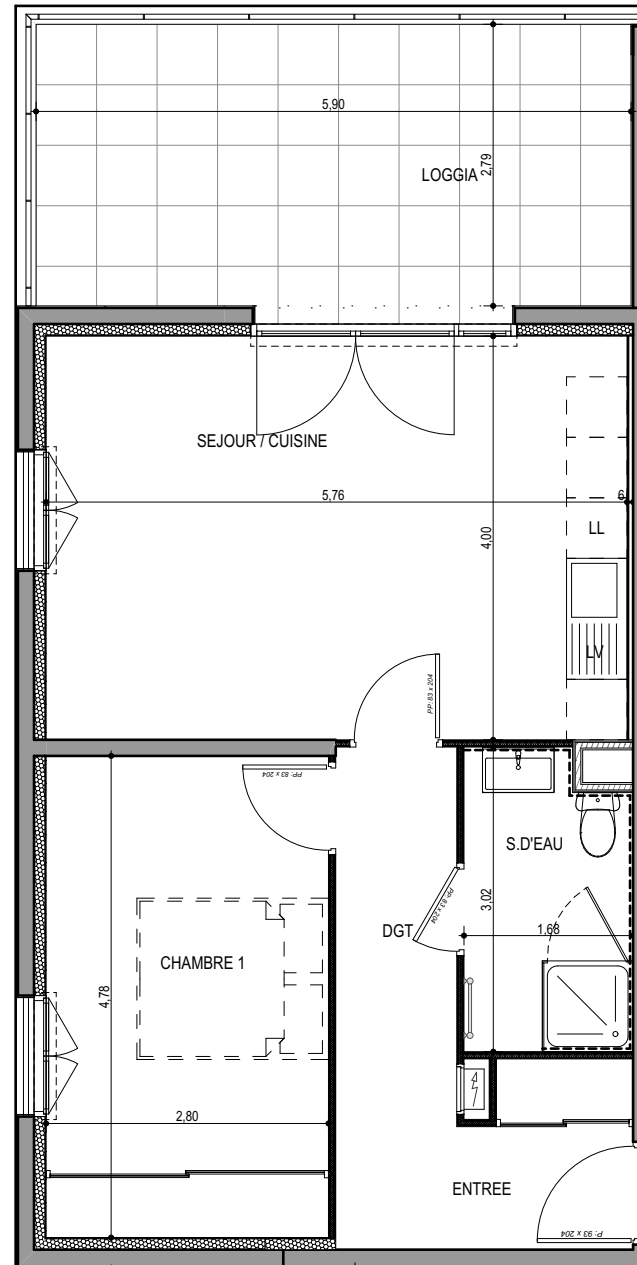
**Surfaces habitables**

Entrée	4,40 m <sup>2</sup>
Séjour - Cuisine	23,30 m <sup>2</sup>
Dégagement	4,50 m <sup>2</sup>
Chambre	13,20 m <sup>2</sup>
Salle de bain	4,85 m <sup>2</sup>
<b>TOTAL</b>	<b>50,25 m<sup>2</sup></b>

Loggia	16,70 m <sup>2</sup>
--------	----------------------



17 / 09 / 2021



**PLAN DE VENTE**