

# "LES TERRASSES DU STILETTO" - Bâtiment B1

Chemin du Stiletto - AJACCIO

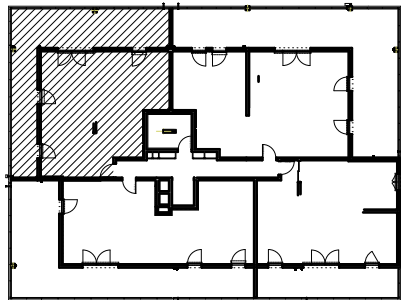
**Appartement: B1-42**

R+4

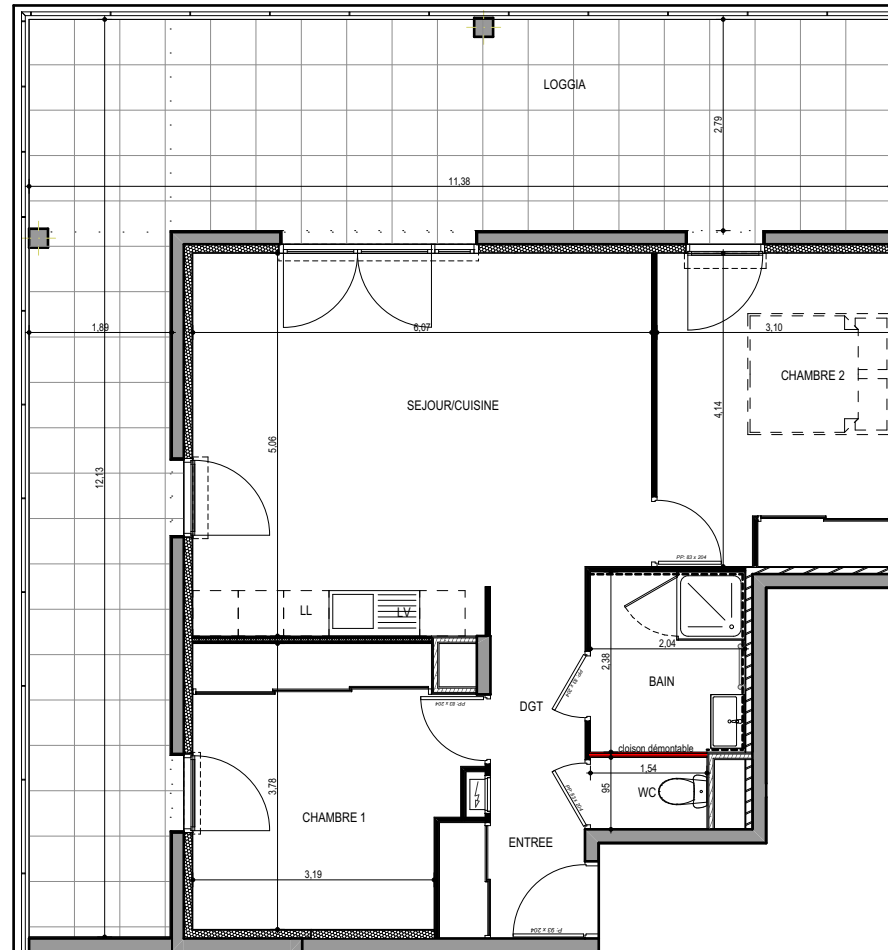
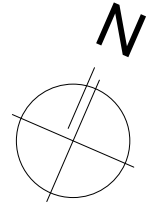
T3

**Surfaces habitables**

Entrée	2.85 m <sup>2</sup>
Séjour - Cuisine	27.95 m <sup>2</sup>
Chambre 1	13.25 m <sup>2</sup>
Chambre 2	12.65 m <sup>2</sup>
Salle de bain	4.85 m <sup>2</sup>
WC	1.45 m <sup>2</sup>
DGT	4.25 m <sup>2</sup>
<b>TOTAL</b>	<b>67.25 m<sup>2</sup></b>
Loggia	49.50 m <sup>2</sup>



17 / 09 / 2021



**PLAN DE VENTE**