

"LES TERRASSES DU STILETTO" - Bâtiment B2

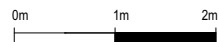
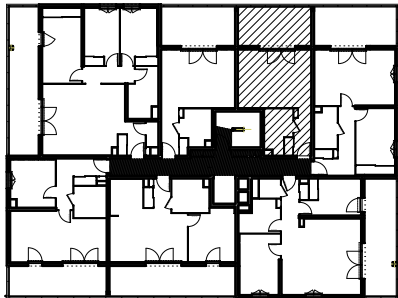
Chemin du Stiletto - AJACCIO

Appartement: B2-33

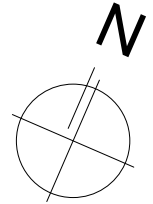
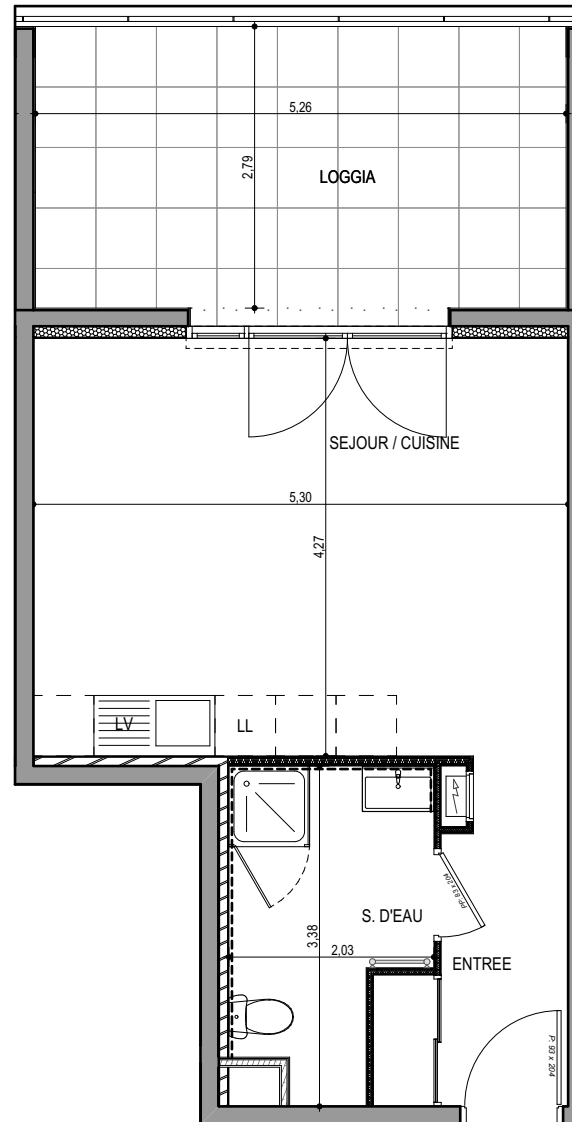
R+3

T1
Surfaces habitables

Entrée	5.15 m ²
Séjour - Cuisine	22.65 m ²
Salle de bain - WC	5.45 m ²
TOTAL	33.25 m²
Loggia	14.90 m ²



17 / 09 / 2021



PLAN DE VENTE