

# "LES TERRASSES DU STILETTO" - Bâtiment B2

Chemin du Stiletto - AJACCIO

**Appartement: B2-35**

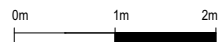
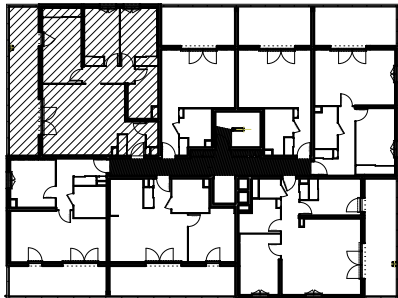
R+3

T4

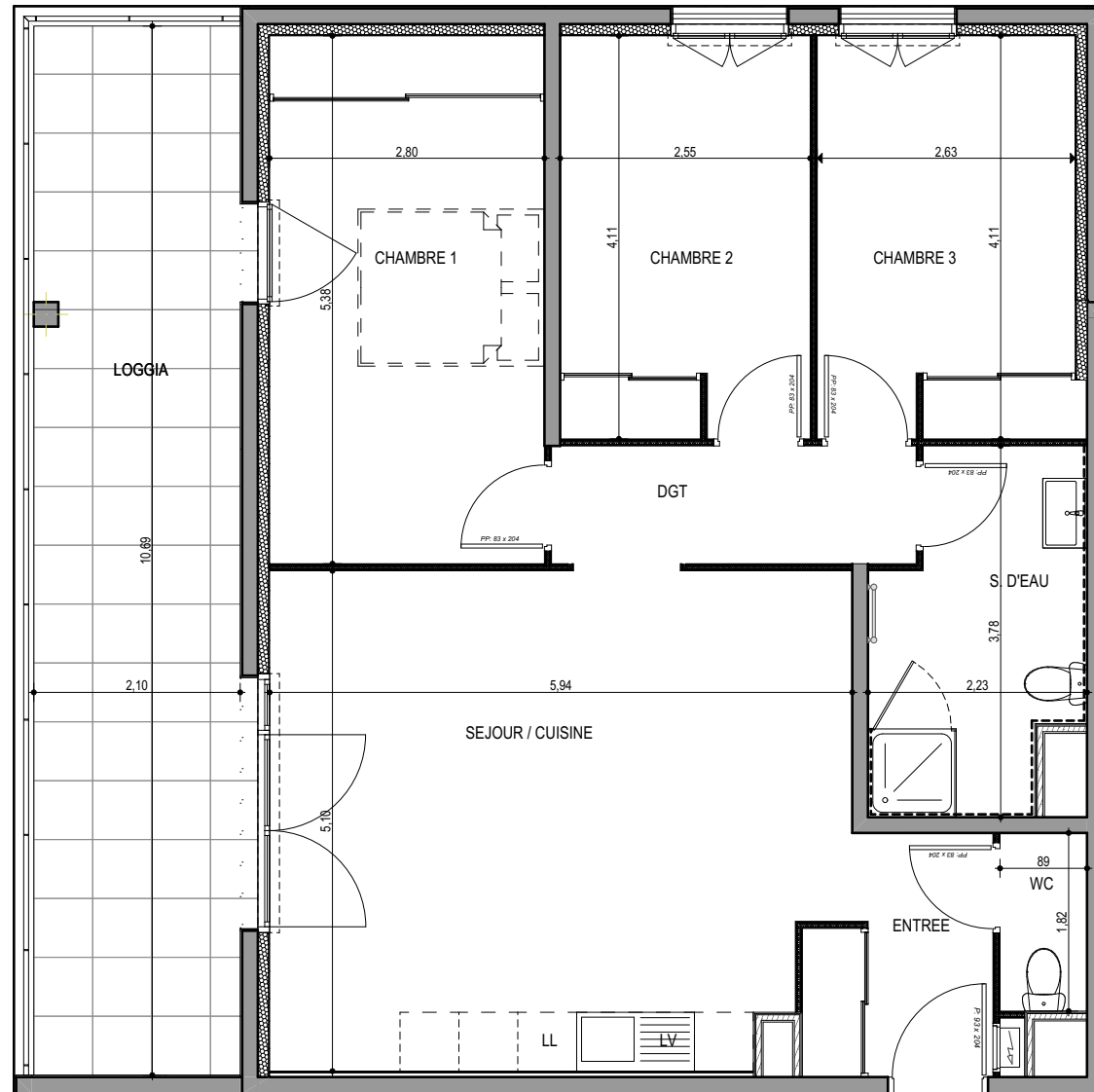
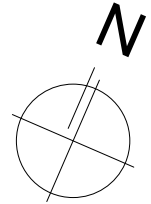
**Surfaces habitables**

Entrée	4.65 m <sup>2</sup>
Séjour - Cuisine	29.65 m <sup>2</sup>
Chambre 1	14.85 m <sup>2</sup>
Chambre 2	10.30 m <sup>2</sup>
Chambre 3	10.70 m <sup>2</sup>
Salle de bain	7.15 m <sup>2</sup>
WC	1.60 m <sup>2</sup>
Dégagement	4.55 m <sup>2</sup>
<b>TOTAL</b>	<b>83.45 m<sup>2</sup></b>

Loggia	22.95 m <sup>2</sup>
--------	----------------------



17 / 09 / 2021



**PLAN DE VENTE**