

# "LES TERRASSES DU STILETTO" - Bâtiment C2

Chemin du Stiletto - AJACCIO

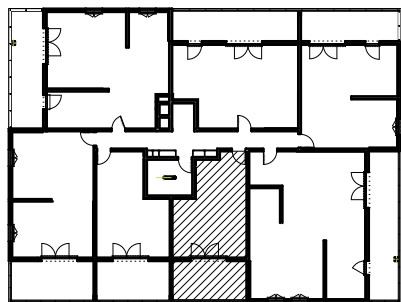
**Appartement: C2-24**

R+2

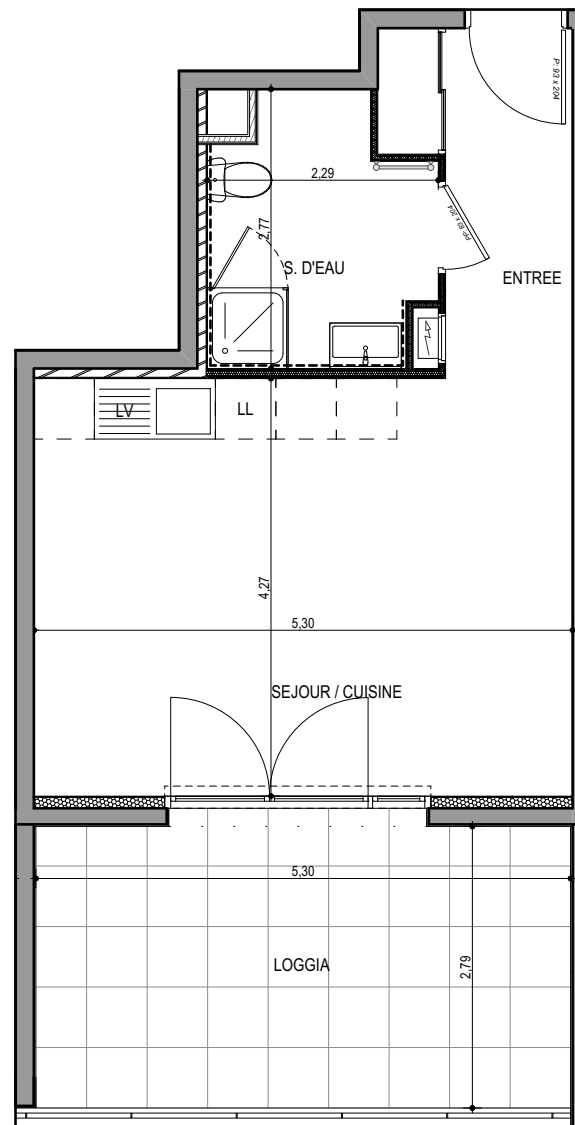
T1

**Surfaces habitables**

Entrée	5.15 m <sup>2</sup>
Séjour - Cuisine	22.65 m <sup>2</sup>
Salle de bain - WC	5.35 m <sup>2</sup>
<b>TOTAL</b>	<b>33.15 m<sup>2</sup></b>
Loggia	14.90 m <sup>2</sup>



17 / 09 / 2021



**PLAN DE VENTE**