

# "LES TERRASSES DU STILETTO" - Bâtiment A1

Chemin du Stiletto - AJACCIO

Appartement: A1-34

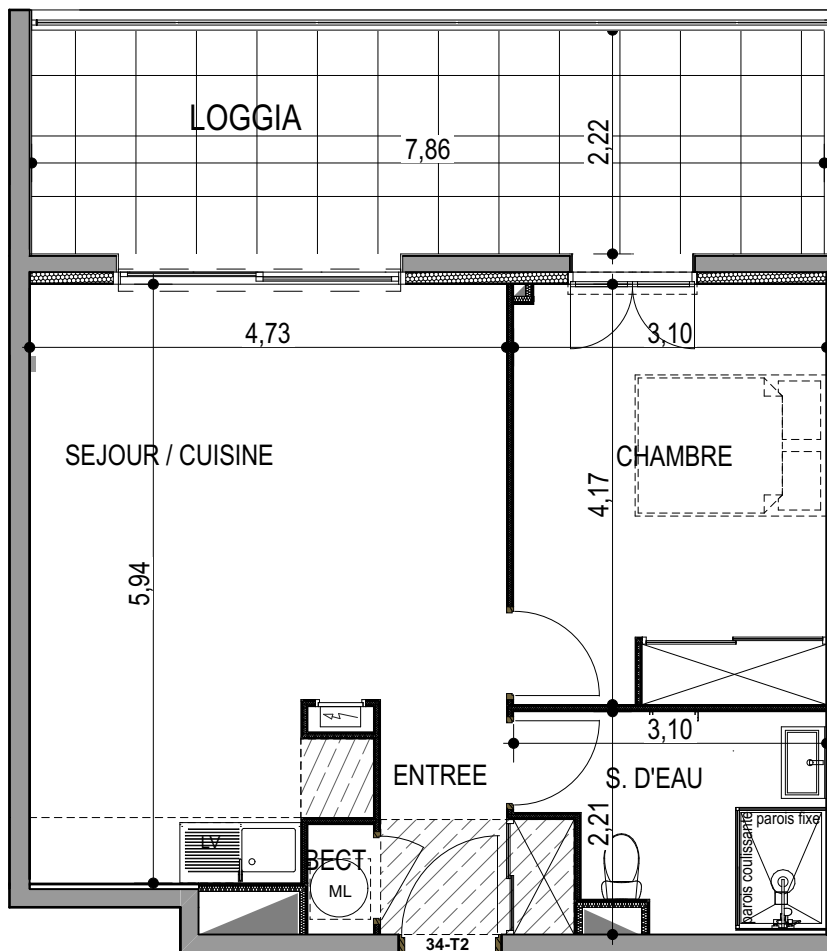
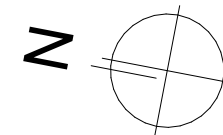
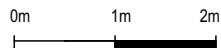
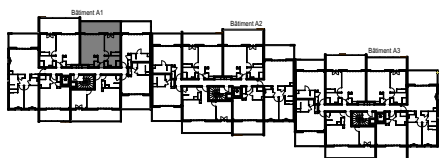
R+3

T2

Surfaces habitables

Entrée	3.60 m <sup>2</sup>
Séjour - Cuisine	24.95 m <sup>2</sup>
Chambre	12.75 m <sup>2</sup>
Salle d'eau	5.75 m <sup>2</sup>
Placard ECT	0.70 m <sup>2</sup>
<b>TOTAL</b>	<b>47.75 m<sup>2</sup></b>

Loggia	17.45 m <sup>2</sup>
--------	----------------------



**PLAN DE VENTE**