

# "LES TERRASSES DU STILETTO" - Bâtiment A1

Chemin du Stiletto - AJACCIO

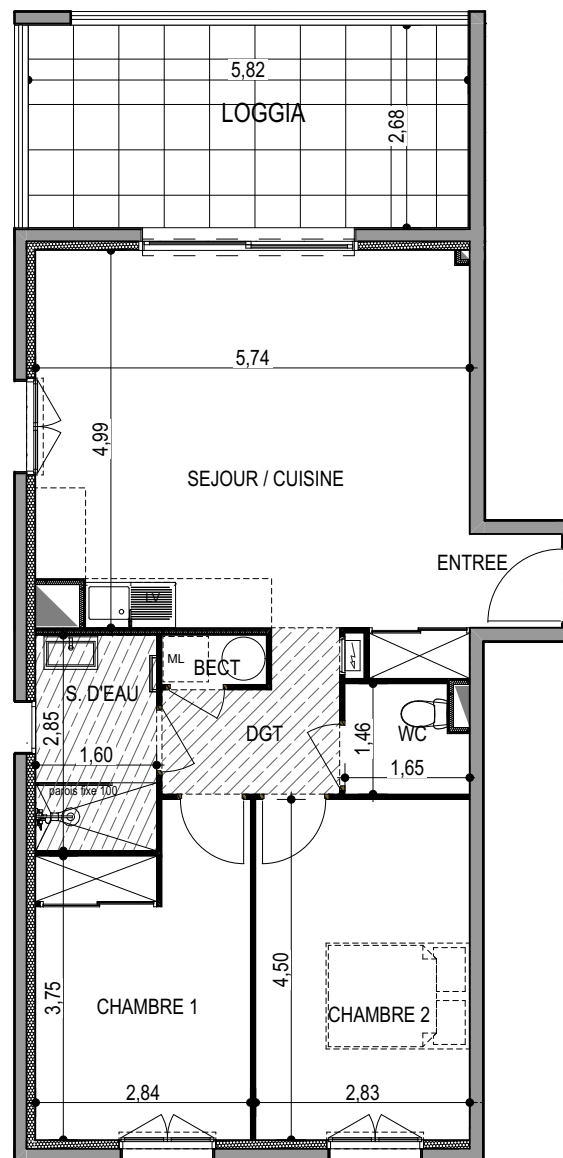
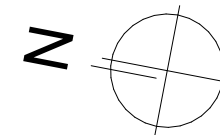
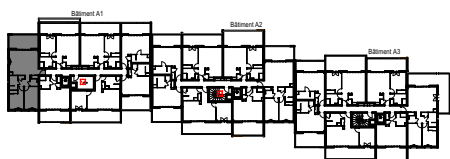
**Appartement: A1-42**

R+4

T3

**Surfaces habitables**

Entrée	2.35 m <sup>2</sup>
Séjour - Cuisine	28.15 m <sup>2</sup>
Dégagement	4.00 m <sup>2</sup>
Chambre 1	11.35 m <sup>2</sup>
Chambre 2	12.60 m <sup>2</sup>
WC	2.20 m <sup>2</sup>
Salle d'eau	4.55 m <sup>2</sup>
Placard ECT	0.90 m <sup>2</sup>
<b>TOTAL</b>	<b>66.10 m<sup>2</sup></b>
Loggia	15.60 m <sup>2</sup>



**PLAN DE VENTE**