

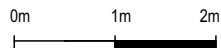
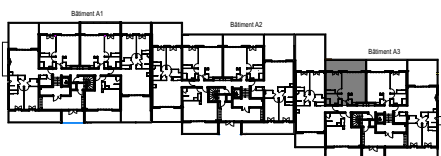
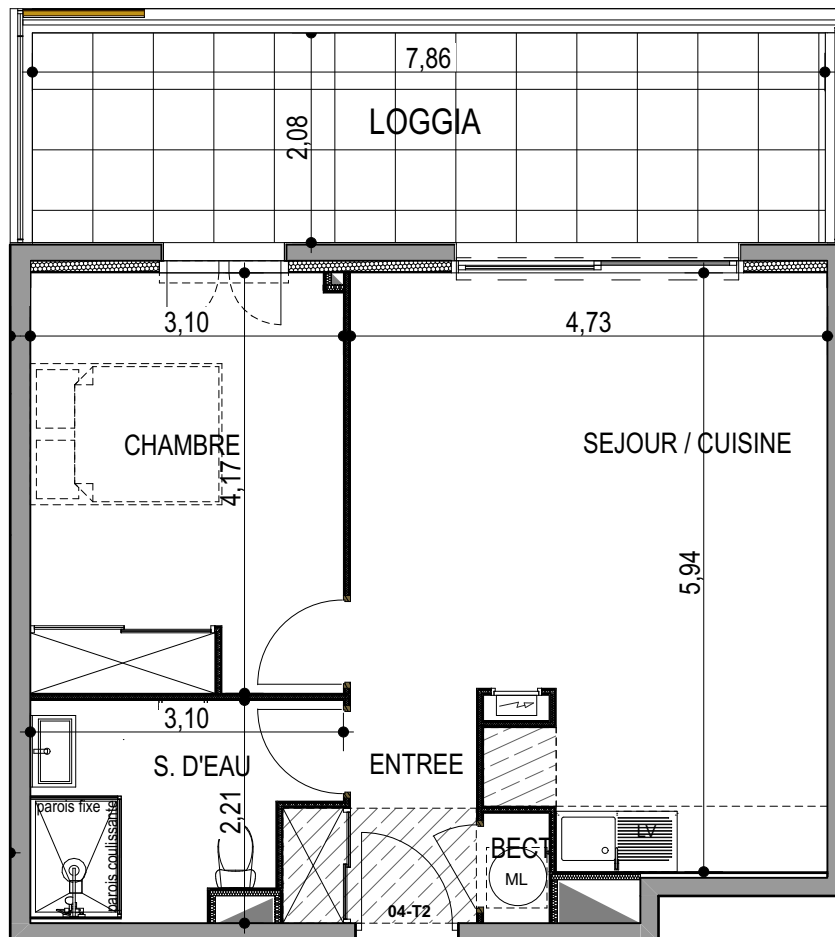
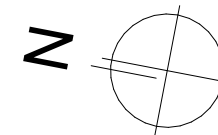
# "LES TERRASSES DU STILETTO" - Bâtiment A3

Chemin du Stiletto - AJACCIO

**Appartement: A3-04**  
RDC

T2  
**Surfaces habitables**

Entrée	3.60 m <sup>2</sup>
Séjour - Cuisine	24.95 m <sup>2</sup>
Chambre	12.75 m <sup>2</sup>
Salle d'eau	5.75 m <sup>2</sup>
Placard ECT	0.70 m <sup>2</sup>
<b>TOTAL</b>	<b>47.75 m<sup>2</sup></b>
Loggia	16.35 m <sup>2</sup>



**PLAN DE VENTE**