

# "LES TERRASSES DU STILETTO" - Bâtiment A3

Chemin du Stiletto - AJACCIO

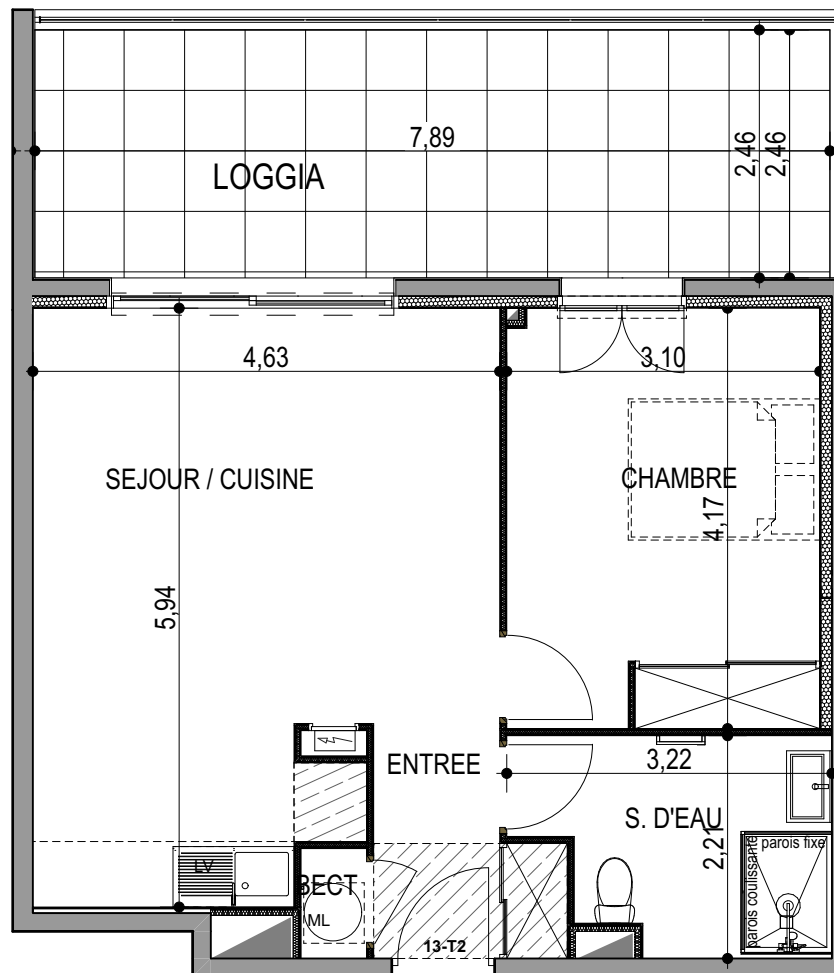
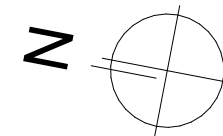
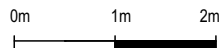
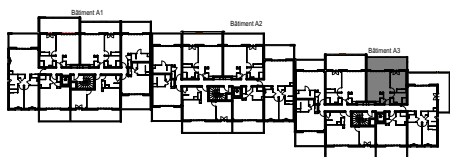
Appartement: A3-13

R+1

T2

Surfaces habitables

Entrée	3.60 m <sup>2</sup>
Séjour - Cuisine	24.35 m <sup>2</sup>
Chambre	12.75 m <sup>2</sup>
Salle d'eau	6.00 m <sup>2</sup>
Placard ECT	0.70 m <sup>2</sup>
<b>TOTAL</b>	<b>47.40 m<sup>2</sup></b>
Loggia	19.40 m <sup>2</sup>



**PLAN DE VENTE**