

# "LES TERRASSES DU STILETTO" - Bâtiment A3

Chemin du Stiletto - AJACCIO

**Appartement: A3-17**

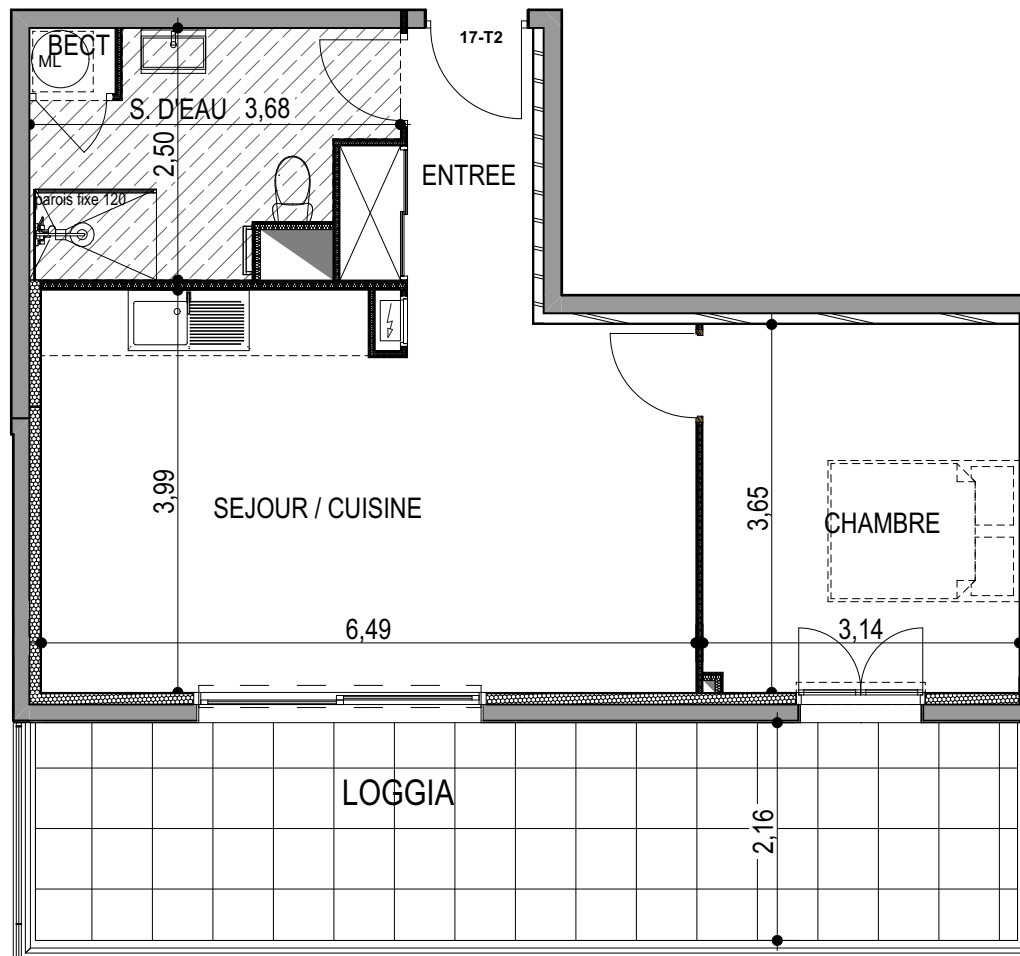
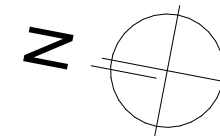
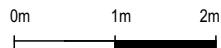
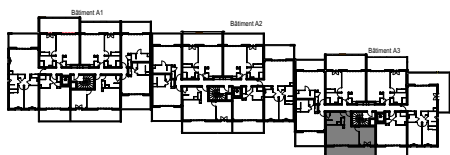
R+1

T2

**Surfaces habitables**

Entrée	4.00 m <sup>2</sup>
Séjour - Cuisine	25.10 m <sup>2</sup>
Chambre	11.45 m <sup>2</sup>
Salle d'eau	7.15 m <sup>2</sup>
Placard ECT	0.55 m <sup>2</sup>
<b>TOTAL</b>	<b>48.25 m<sup>2</sup></b>

Loggia	21.05 m <sup>2</sup>
--------	----------------------



**PLAN DE VENTE**