

"LES TERRASSES DU STILETTO" - Bâtiment A3

Chemin du Stiletto - AJACCIO

Appartement: A3-21

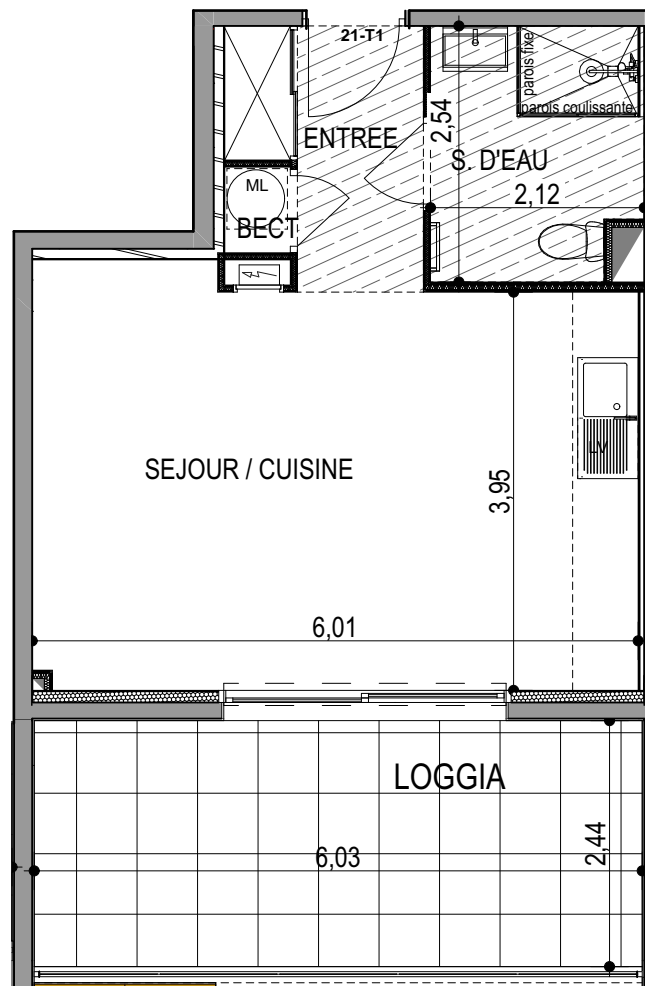
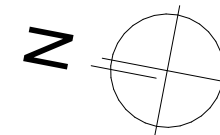
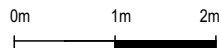
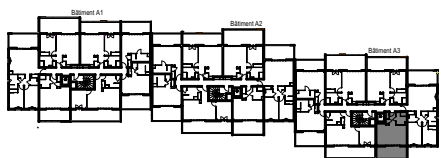
R+2

T1

Surfaces habitables

Entrée	4.15 m ²
Séjour - Cuisine	24.30 m ²
Salle d'eau	5.10 m ²
Placard ECT	0.55 m ²
TOTAL	34.10 m²

Loggia	14.70 m ²
--------	----------------------



PLAN DE VENTE