

"LES TERRASSES DU STILETTO" - Bâtiment A3

Chemin du Stiletto - AJACCIO

Appartement: A3-26

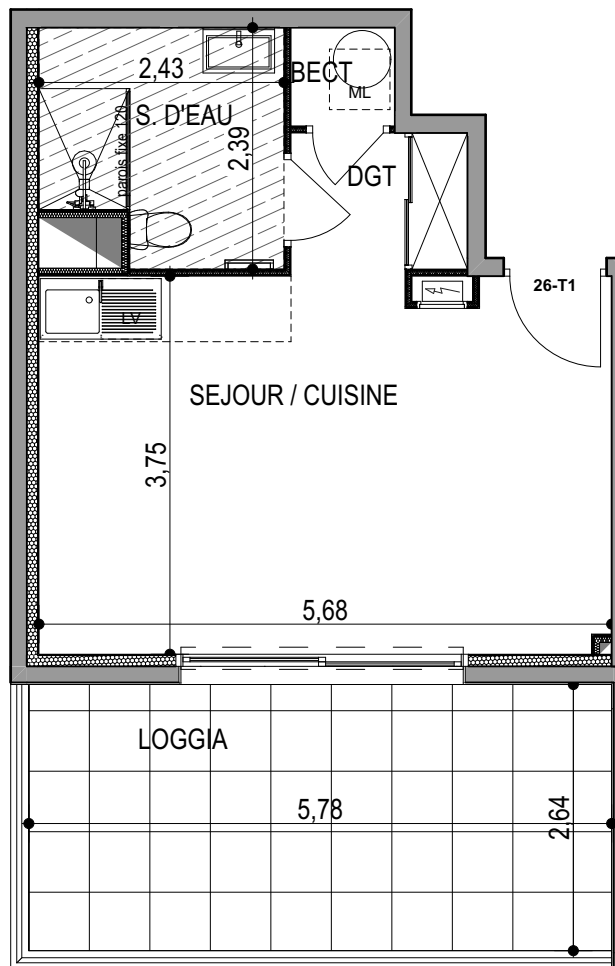
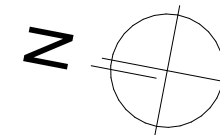
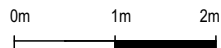
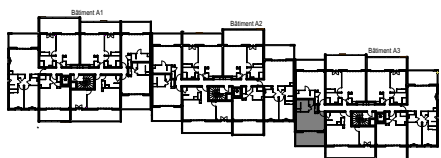
R+2

T1

Surfaces habitables

Séjour - Cuisine	21.05 m ²
DGT	2.35 m ²
Salle d'eau	5.30 m ²
Placard ECT	1.00 m ²
TOTAL	29.70 m²

Loggia	15.25 m ²
--------	----------------------



PLAN DE VENTE