

"LES TERRASSES DU STILETTO" - Bâtiment A3

Chemin du Stiletto - AJACCIO

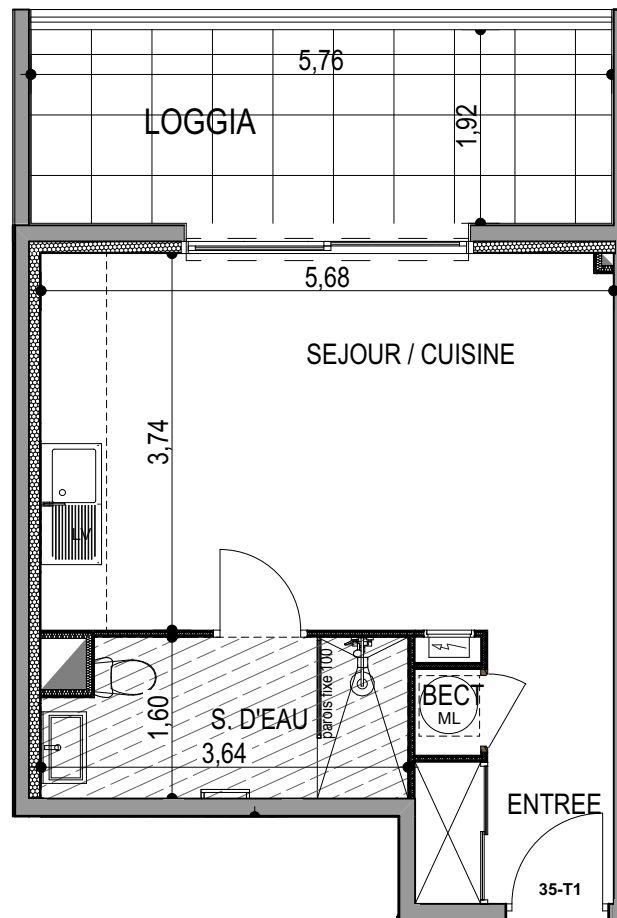
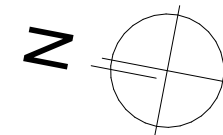
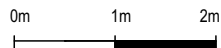
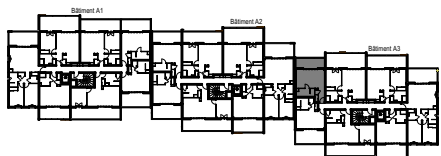
Appartement: A3-35

R+3

T1

Surfaces habitables

Entrée	4.30 m ²
Séjour - Cuisine	21.20 m ²
Salle d'eau	5.50 m ²
Placard ECT	0.55 m ²
TOTAL	31.55 m²
Loggia	11.05 m ²



PLAN DE VENTE