

"LES TERRASSES DU STILETTO" - Bâtiment D2 Entrée B

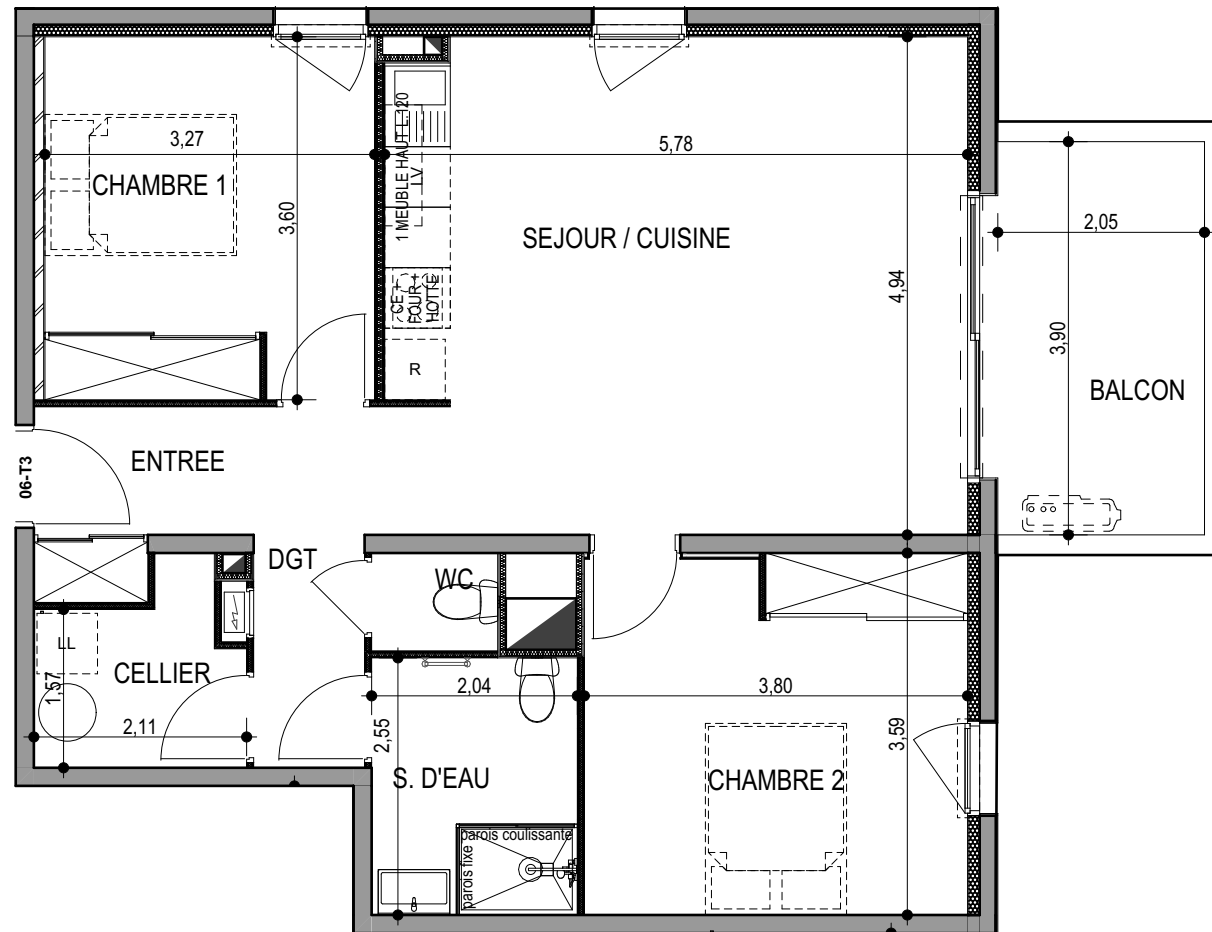
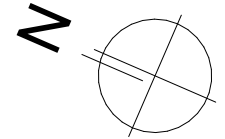
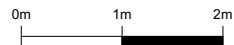
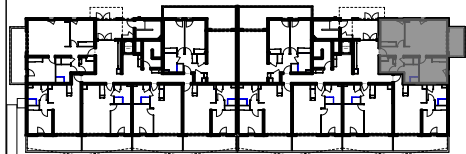
Chemin du Stiletto - AJACCIO

Appartement: D2 - 06B
RDC

T3
Surfaces habitables

ENTREE	5,92
SEJOUR / CUISINE	27,64
DGT	2,54
S. D'EAU	5,20
CHAMBRE 1	11,58
CHAMBRE 2	13,35
WC	1,21
CELLIER	3,52
	70,96 m²

BALCON	8,00
	8,00 m²



PLAN DE VENTE

DATE : 02 / 06 / 2023