

"LES TERRASSES DU STILETTO" - Bâtiment D2 Entrée B

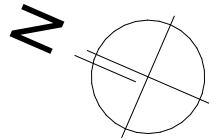
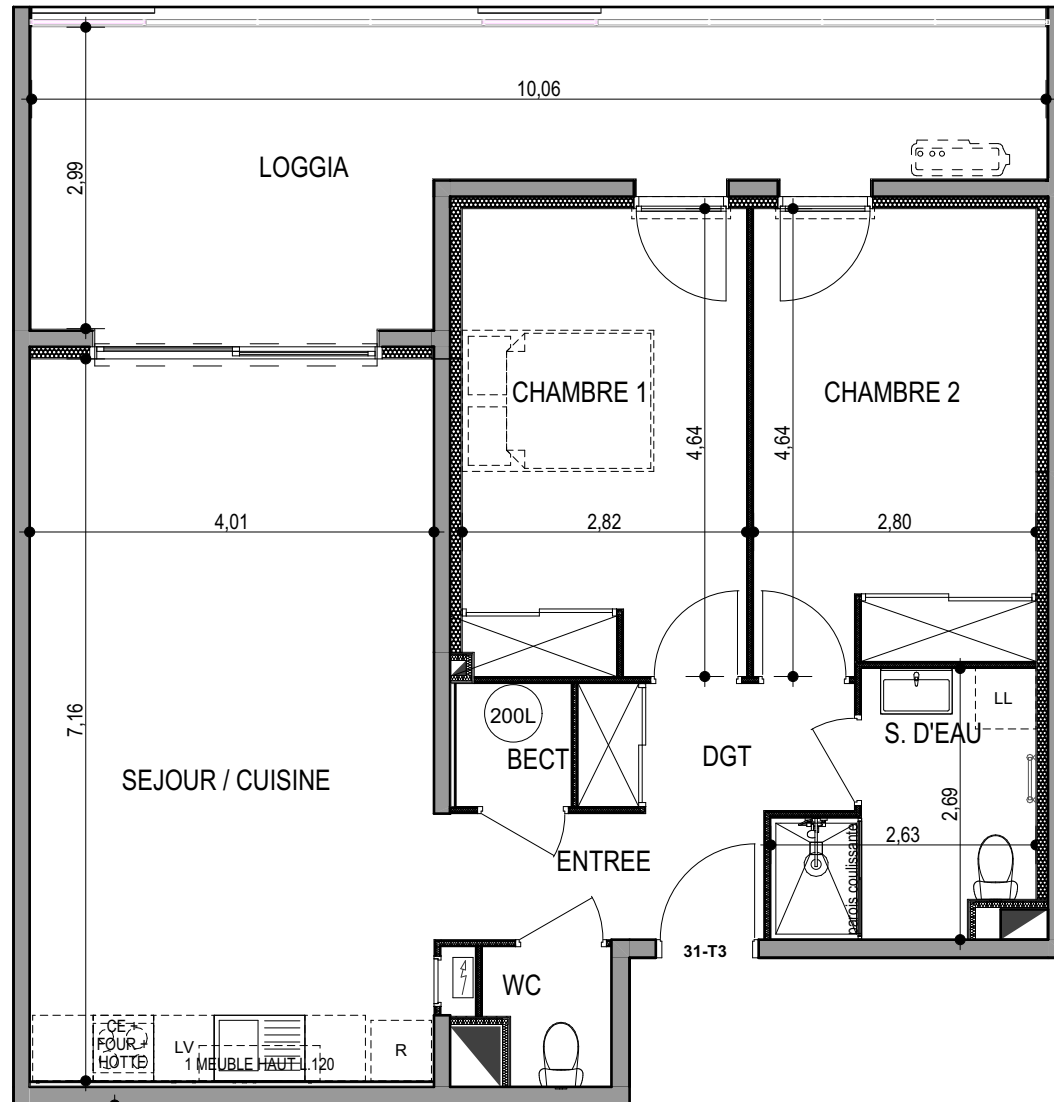
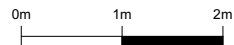
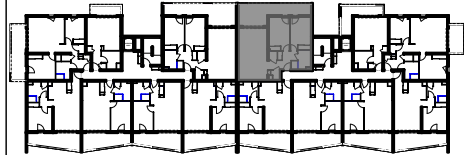
Chemin du Stiletto - AJACCIO

Appartement: D2 - 31B
R+3

T3
Surfaces habitables

ENTREE	3,92
SEJOUR / CUISINE	28,71
DGT	3,35
CHAMBRE 1	12,90
CHAMBRE 2	12,55
S. D'EAU	5,47
WC	1,58
BECT	1,39
	69,88 m²

LOGGIA	21,01
	21,01 m²



PLAN DE VENTE
DATE : 02 / 06 / 2023